

AVAILABLE AT YOUR LOCAL WHOLESALER



HVAC Controls

ZONE CONTROL MADE SIMPLE

Zoning and Damper Selection Guide



888.359.0362 • www.iohvaccontrols.com

*Thank you
for supporting
American jobs*

ESP ZONE PANELS

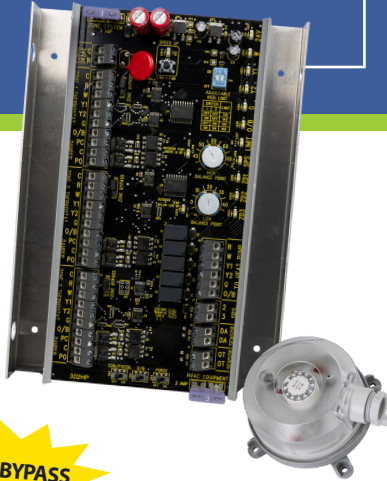
2 Zones



**NO BYPASS
REQUIRED!**

ZP2-HC-ESP (1 Heat / 1 Cool)

3 Zones



**NO BYPASS
REQUIRED!**

ZP3-HCMS-ESP (Up to 2 Heat / 2 Cool)
ZP3-HPS-ESP (Up to 3 Heat / 2 Cool,
Heat Pump or Dual Fuel)

4 Zones



**NO BYPASS
REQUIRED!**

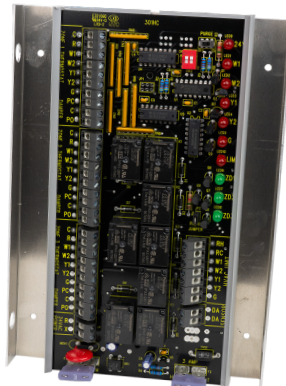
ZP4-ESP (Up to 3 Heat / 2 Cool,
Heat Pump or Dual Fuel)

All of our ESP zone panels are equipped with our award-winning electronic static pressure control technology. As zone dampers open and close, the static pressure sensor continuously monitors the system static pressure. If the static pressure goes above the static pressure setpoint, the panel will open the non-calling zones just enough to relieve the excess pressure and bring the system below the desired setpoint. This eliminates the need for a bypass damper. *The static pressure sensor is included.*

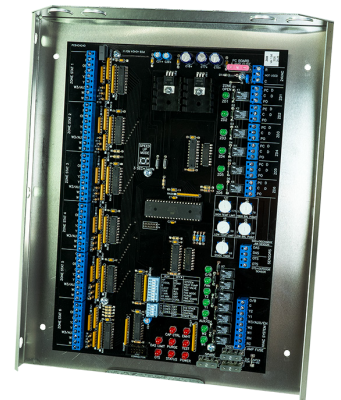
STANDARD ZONE PANELS



ZP2-HC (1 Heat / 1 Cool)



ZP3-HCMS (Up to 2 Heat / 2 Cool)
ZP3-HPS (Up to 3 Heat / 2 Cool,
Heat Pump or Dual Fuel)



ZP6 (Up to 3 Heat / 2 Cool,
Heat Pump or Dual Fuel)

All zone panels have a 10 year warranty

6 Zones



**NO BYPASS
REQUIRED!**

ZP6-ESP (Up to 4 Heat / 2 Cool,
Heat Pump or Dual Fuel)

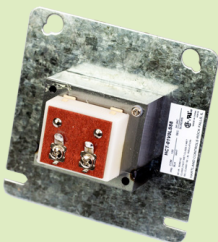
Additional Products



**Discharge and
Return Air Sensor**
ZPA-DTS



**Outdoor
Temperature
Sensors**
ZPA-OTS
ZP3-OTS



Transformers
TR-40 (40VA)
TR-75 (75VA)

ZONE PANEL FEATURES	ZP2-HC	ZP3-HCMS	ZP3-HPS	ZP4-ESP	ZP6
NUMBER OF ZONES	2	3	3	4	6
EXPANDABLE TO					12
HEAT / COOL PANEL	✓	✓		✓	✓
HEAT PUMP PANEL			✓	✓	✓
HEATING STAGES	1	2	3	3	3*
COOLING STAGES	1	2	2	2	2
STAGING BY THERMOSTAT		✓	✓	✓	✓
STAGING BY TIMER					✓
CAPACITY CONTROL				✓	✓
BUILT-IN DUAL FUEL KIT			✓	✓	✓
AUTO CHANGEOVER	✓	✓	✓	✓	✓
FIRST CALL PRIORITY	✓	✓	✓	✓	
COOLING PRIORITY					✓
MAJORITY WINS PRIORITY					✓
TIME SHARE	✓	✓	✓	✓	✓
HI / LOW LIMIT SENSOR	✓	✓	✓	✓	✓
INDEPENDENT FAN MODE	✓	✓	✓	✓	✓
SYSTEM STATUS LEDS	✓	✓	✓	✓	✓
SHORT CYCLE PROTECTION	✓	✓	✓	✓	✓
PURGE CYCLE		✓	✓	✓	✓
2-WIRE DAMPERS	✓	✓	✓	✓	✓
3-WIRE DAMPERS <i>MUST BE USED WITH ESP PANELS</i>	✓	✓	✓	✓	✓
DOUBLE FUSED	✓	✓	✓	✓	✓
10 YEAR WARRANTY	✓	✓	✓	✓	✓

*6 zone ESP panel has up to 4 heating stages

DAMPER SELECTION GUIDE

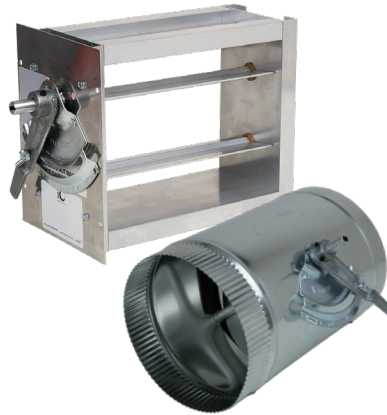


Compatible with all standard zone boards

D/HD SERIES ZONE DAMPERS

- 5 year warranty
- D-XX
- 4" to 20"
- HD-XXXX
- 6" x 6" to 36" x 20"
- Side mount and bottom mount

HD-Motor
2-wire PC/SO
(10VA)
30 Second Timing



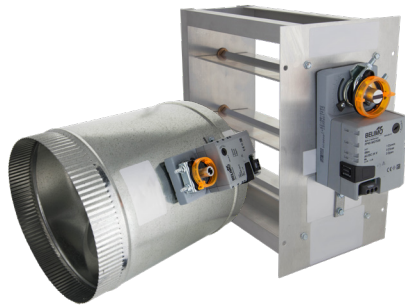
MBD SERIES (MANUAL BALANCING) DAMPERS

- 5 year warranty
- MBD-XX
- 6" to 20"
- MBD-XXXX
- 6" x 6" to 36" x 24"
- Side mount and bottom mount
- Custom sizes available upon request

WE ALSO CARRY FULL LINES OF ELECTRONIC AND BAROMETRIC BYPASS DAMPERS



Equipped with Belimo actuators- the industry's best



Compatible with all ESP zone boards and standard zone boards

MD SERIES (MULTI-PURPOSE) ZONE DAMPERS

- 5 year warranty
- MD-XX
- 4" to 20"
- MD-XXXX
- 6" x 6" to 36" x 24"
- Side mount and bottom mount

Belimo FP18-Motor
3-wire PC/PO, floating point
(2.5VA)
60 Second Timing



Compatible with Carrier® Infinity® and Bryant® Evolution® systems

CARRIER® ZONE DAMPERS

- 10 year warranty
- CD-XX
- 4" to 20"
- CD-XXXX
- 6" x 6" to 36" x 24"
- Side mount and bottom mount

Belimo CD-Motor
3-wire PC/PO, floating point
(2.5VA)
15 Second Timing



Compatible with Trane® ComfortLink™ II and American Standard® AccuLink™ systems

TRANE® ZONE DAMPERS

- 10 year warranty
- TD-XX
- 4" to 20"
- TD-XXXX
- 6" x 6" to 36" x 24"
- Side mount and bottom mount

Belimo TD-Motor
3-wire PC/PO, floating point
(1.5VA)
60 Second Timing



Compatible with Rheem® and Ruud® Econet® systems

RHEEM® ZONE DAMPERS

- 10 year warranty
- RM-XX
- 4" to 20"
- RM-XXXX
- 6" x 6" to 36" x 24"
- Side mount and bottom mount

Belimo RM-Motor
3-wire PC/PO, floating point
(2.5VA)
35 Second Timing



Compatible with all ESP zone boards and standard zone boards

RETROFIT ZONE DAMPERS

- 5 year warranty
- Ask about options compatible with specialty systems
- RD-XX
- 5" to 10"

Belimo FP18-Motor
3-wire PC/PO, floating point
(2.5VA)
60 Second Timing



Compatible with all ESP zone boards and standard zone boards

REGISTER BOOT DAMPER

- 5 year warranty
- RBD-XX
- 6", 8"

Belimo FP18-Motor
3-wire PC/PO, floating point
(1.5VA)
35 Second Timing